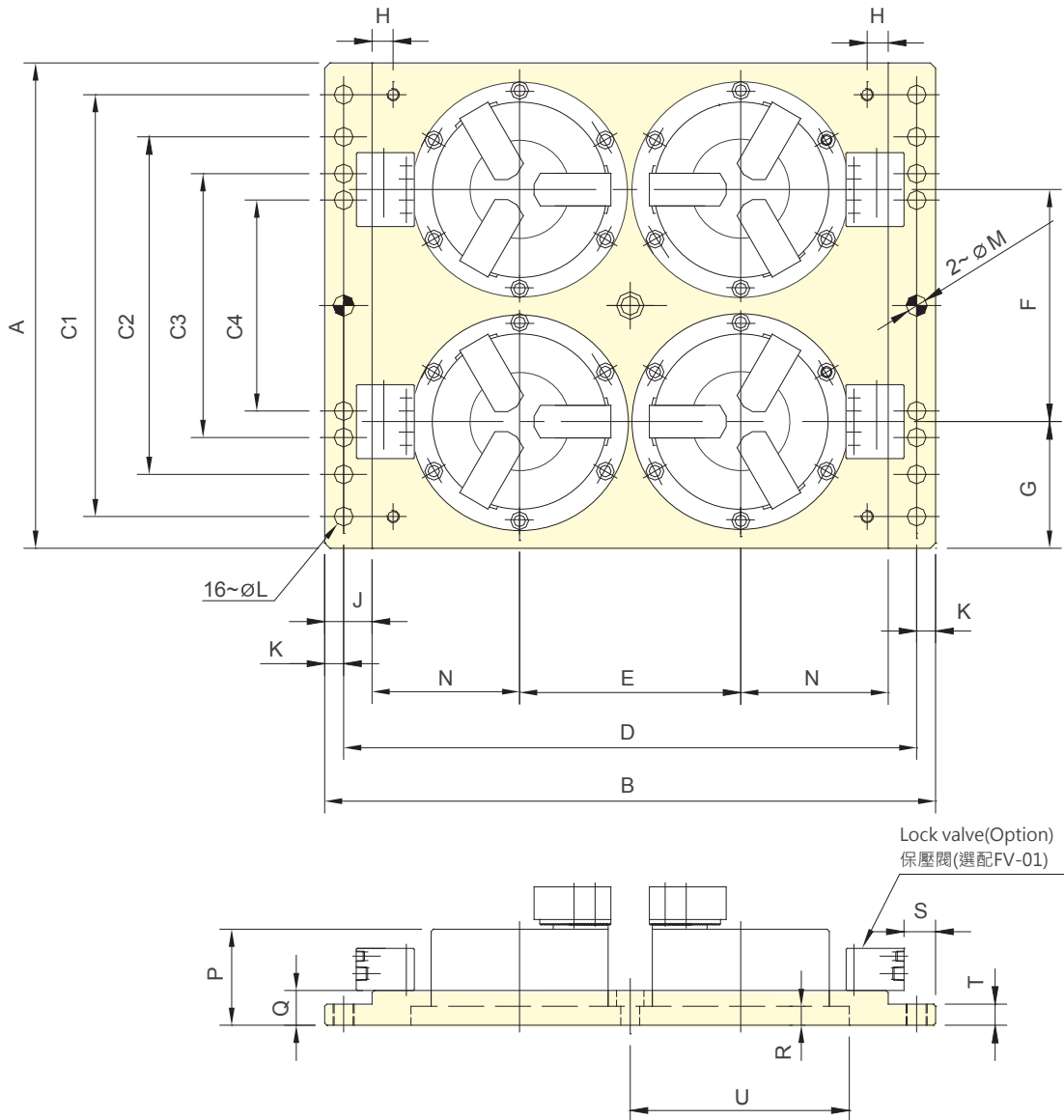


- 可用於銑床或加工中心機上，同時加工多個工件。
- 可選擇安裝立式氣缸用保壓閥。
- 可訂製2、3、6工件數的盤面。
- Use for milling machine or machining center to achieve simultaneous processing of multiple workpieces.
- Stationary cylinder lock valve (option) can be mounted.
- Plate for 2,3,6 stationary chucks is an option.



立置式夾頭

保留規格修改的權利
Subject to technical changes

外型尺寸 DIMENSIONS

Model	A	B	C1	C2	C3	C4	D	E	F	G		
MP4-06206	460	580	400	320	250	200	544	210	220	120		
Model	H	J	K	L	M	N	P	Q	R	S	T	U
MP4-06206	20	45	18	17	20	140	*B	33	18	20	20	206

*B 對照所裝配夾頭型號之寸法 B。
The dimension *B: Please refer to the dimension B of the chuck model assembled.