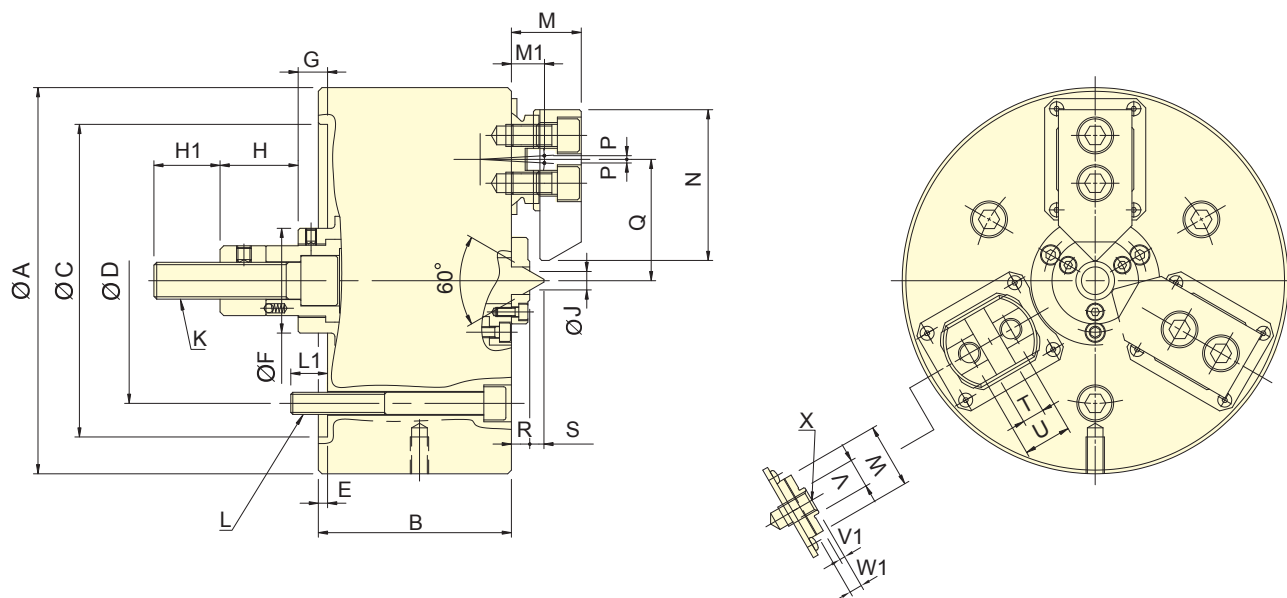




- 工件偏心補償量2mm，中心頂針定位，三爪擺動夾持工件。
- 適合鑄件及鍛件等原材料進行加工。
- 特殊防水密封圈，防塵及防切削液，使保養工作更加便利。
- 擺動機構零件均以合金鋼加以熱處理硬化及研磨，以提升產品使用壽命。
- The workpieces compensation of eccentric is 2 mm, fixed position for the center thimble, swing and grasp the workpiece to three jaw.
- Suitable for such materials as the casting and forging to process.
- Special seal proof for dust and cutting fluid, it is more convenient when maintenance.
- Swing parts are to heat treatment hardened and ground for steel, in order to improve products service life.

特殊動力夾頭



保留規格修改的權利  
Subject to technical changes

#### 技術規格 SPECIFICATIONS

型號 Model	楔心行程 Plunger stroke mm	爪行程 (直徑) Jaw stroke (Dia.) mm	夾持直徑 Chuck Dia. mm		容許油壓缸 推力 Max. D.B. pull kN (kgf)	最大夾持力 Max. clamping force kN (kgf)	最高迴轉數 Max. speed min <sup>-1</sup> (r.p.m.)	I Moment of inertia kg·m <sup>2</sup>	重量 Weight kg	適用迴轉缸 Matching cyl.	補償量 Compensation mm
			最大 Max.	最小 Min.							
3R-08	20	8	65	18	19.6(2000)	53.0(5404)	2800	0.15	27	RK-100N	2
3R-10	25	10	90	22	29.4(3000)	67.7(6901)	2500	0.38	45	RK-125N	2

#### 外型尺寸 DIMENSIONS

Model	A	B	C (H6)	D	E	F	G max.	G min.	H	H1	J	K	L	L1
3R-08	210	105	170	133.4	5	57	26	6	42.5	36	10.4	M20x2.5	3~M12	20
3R-10	254	115	220	171.4	5.5	64	36.5	11.5	25	39	15	M20x2.5	3~M16	22.5

Model	M	M1	N	P	Q max.	Q min.	R	S	T (H7)	U	V	V1	W	W1	X
3R-08	38	18	82	2	68	64	10	7.7	12	26	16	3	35	7	M12
3R-10	40	19	102	2.6	82	78	10	11.3	15	32	18	3	40	7	M14